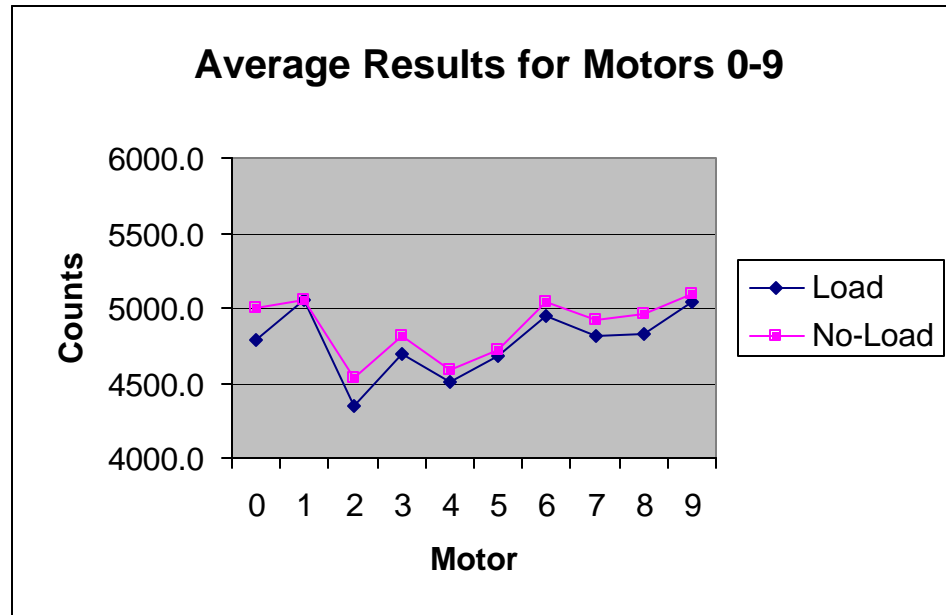


**Motor 0-9 Test Results on Average**

Motor	No-Load	Load
0	5005.7	4790.2
1	5048.6	5048.1
2	4533.9	4346.4
3	4812.0	4693.6
4	4591.2	4507.1
5	4720.8	4674.9
6	5040.1	4947.0
7	4921.1	4816.0
8	4965.8	4821.6
9	5094.5	5035.1
Sum	48733.7	47680.0
Average	4873.4	4768.0
RPM	304.6	298.0



**Matched Motor in experiment**

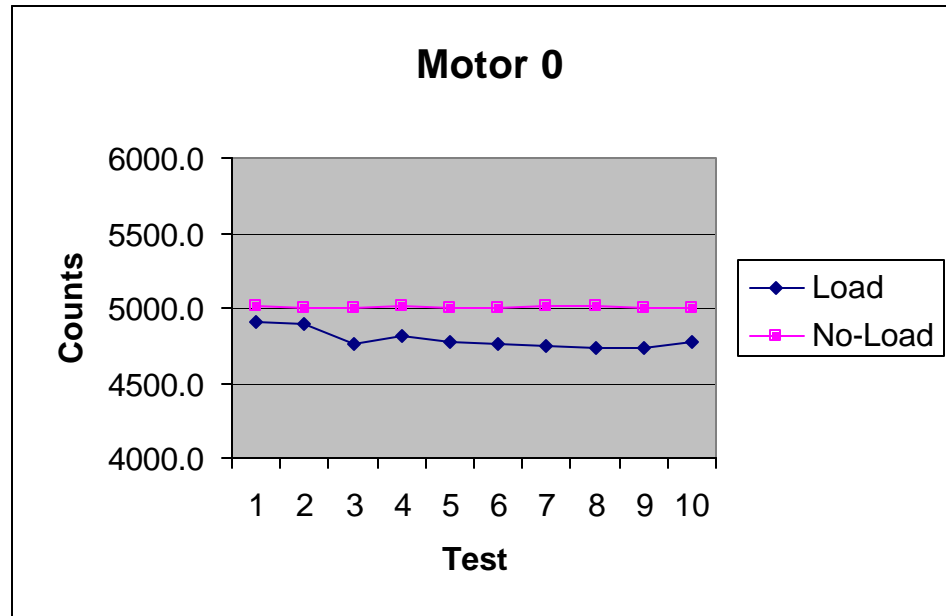
**Motors 7 & 8**

**Non-Matched Motor in experiment**

**Motors 1 & 9**

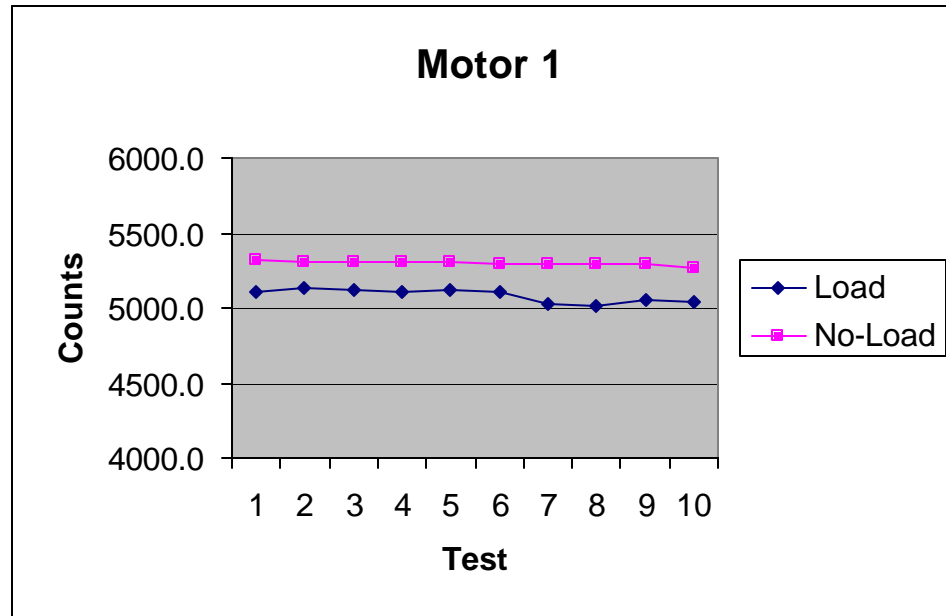
### Motor 0 Test Results

Test #	No-Load	Load
1	5010.0	4906.0
2	5006.0	4888.0
3	5002.0	4760.0
4	5011.0	4817.0
5	5005.0	4769.0
6	5003.0	4765.0
7	5013.0	4748.0
8	5012.0	4740.0
9	4998.0	4729.0
10	4997.0	4780.0
Sum	50057.0	47902.0
Average	5005.7	4790.2
RPM	312.9	299.4



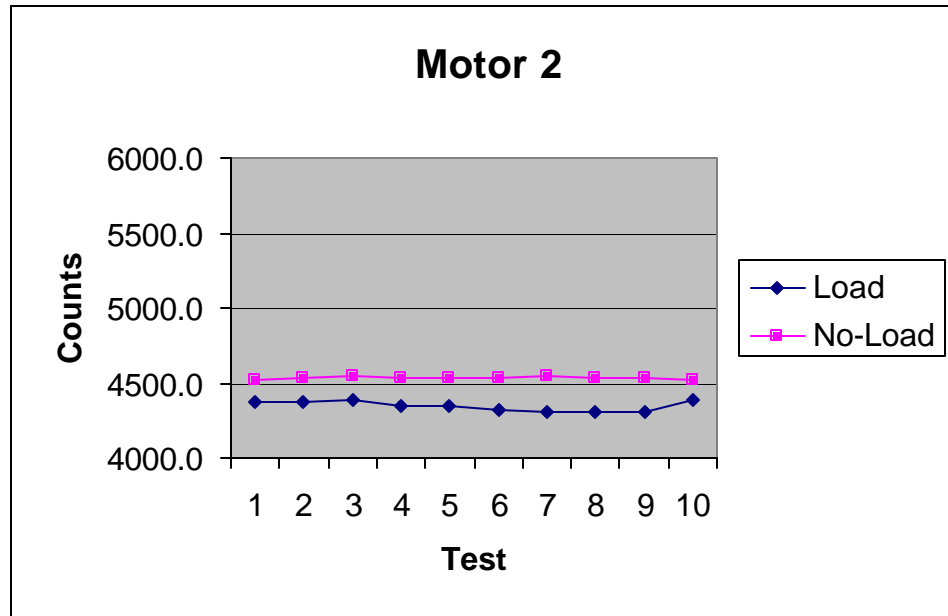
### Motor 1 Test Results

Test #	No-Load	Load
1	5317.0	5108.0
2	5306.0	5134.0
3	5305.0	5126.0
4	5306.0	5112.0
5	5311.0	5116.0
6	5293.0	5101.0
7	5295.0	5030.0
8	5295.0	5013.0
9	5297.0	5060.0
10	5261.0	5041.0
Sum	52986.0	50841.0
Average	5298.6	5084.1
RPM	331.2	317.8



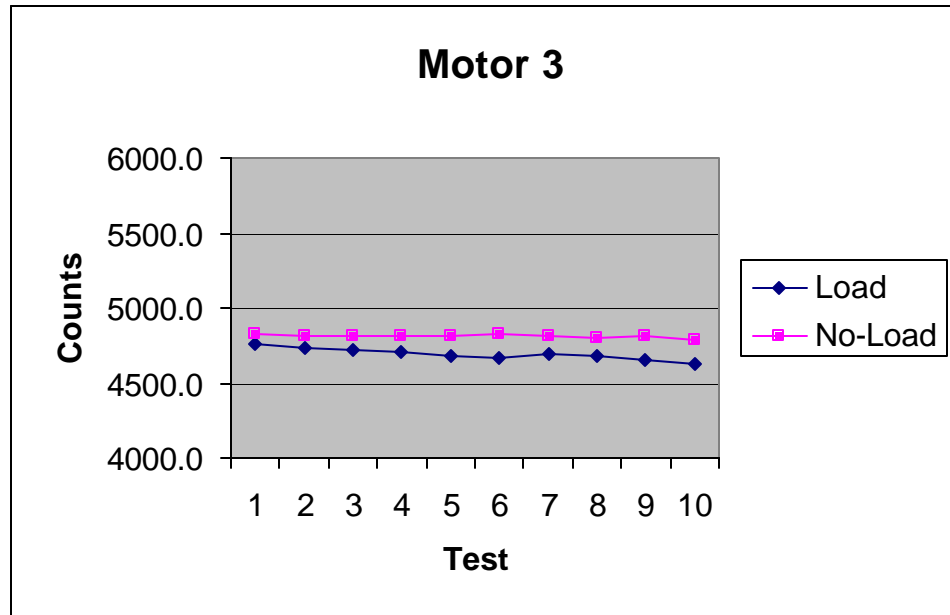
### Motor 2 Test Results

Test #	No-Load	Load
1	4526.0	4378.0
2	4533.0	4379.0
3	4548.0	4389.0
4	4539.0	4344.0
5	4530.0	4342.0
6	4531.0	4321.0
7	4546.0	4301.0
8	4538.0	4308.0
9	4527.0	4313.0
10	4521.0	4389.0
Sum	45339.0	43464.0
Average	4533.9	4346.4
RPM	283.4	271.7



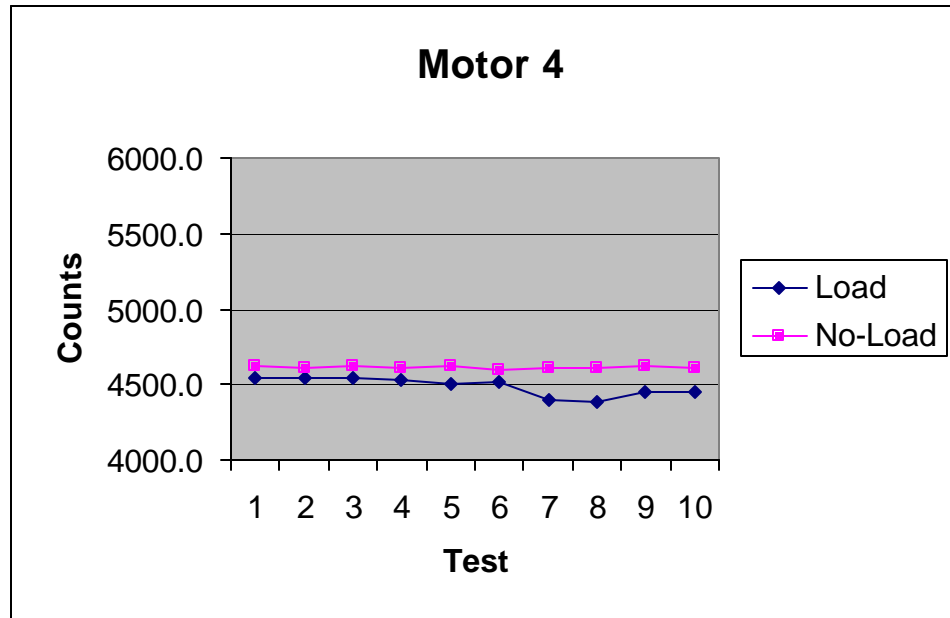
### Motor 3 Test Results

Test #	No-Load	Load
1	4824.0	4765.0
2	4810.0	4736.0
3	4820.0	4723.0
4	4818.0	4705.0
5	4814.0	4675.0
6	4821.0	4666.0
7	4811.0	4699.0
8	4800.0	4675.0
9	4809.0	4660.0
10	4793.0	4632.0
Sum	48120.0	46936.0
Average	4812.0	4693.6
RPM	300.8	293.4



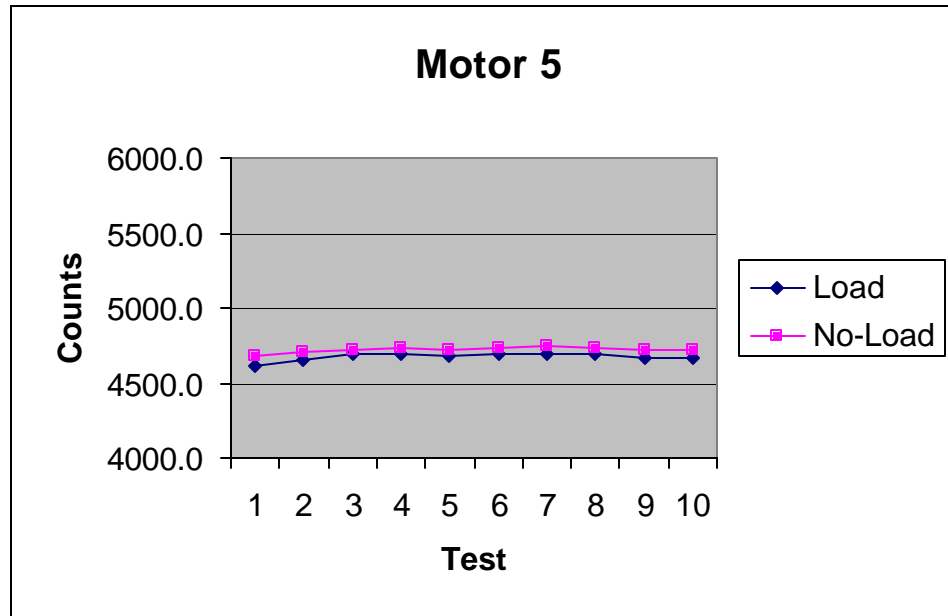
### Motor 4 Test Results

Test #	No-Load	Load
1	4616.0	4541.0
2	4611.0	4538.0
3	4620.0	4544.0
4	4609.0	4528.0
5	4620.0	4497.0
6	4601.0	4521.0
7	4613.0	4403.0
8	4603.0	4383.0
9	4618.0	4451.0
10	4611.0	4455.0
Sum	45912.0	45071.0
Average	4591.2	4507.1
RPM	287.0	281.7



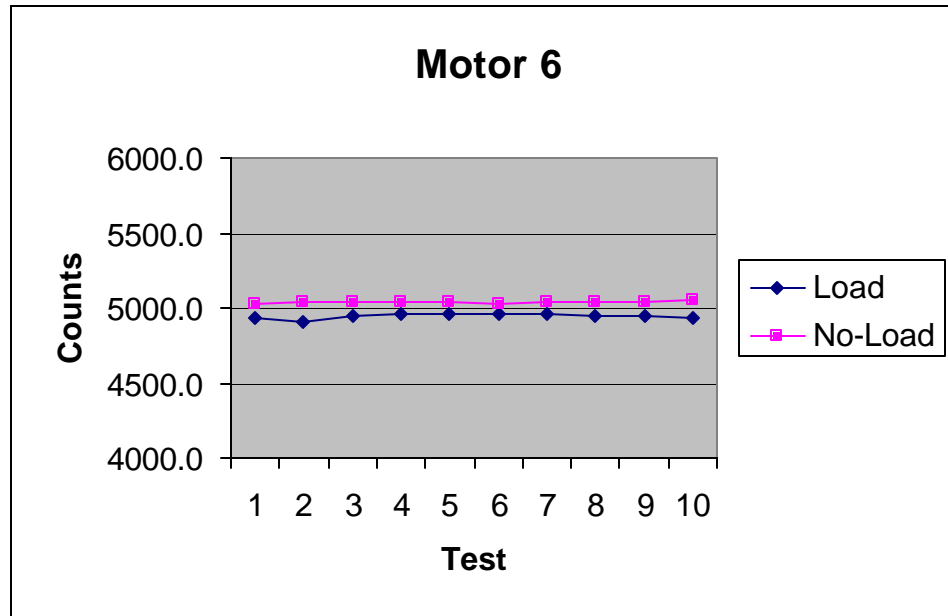
### Motor 5 Test Results

Test #	No-Load	Load
1	4676.0	4615.0
2	4702.0	4660.0
3	4721.0	4696.0
4	4729.0	4694.0
5	4720.0	4684.0
6	4736.0	4694.0
7	4741.0	4690.0
8	4733.0	4690.0
9	4725.0	4663.0
10	4725.0	4663.0
Sum	47208.0	46749.0
Average	4720.8	4674.9
RPM	295.1	292.2



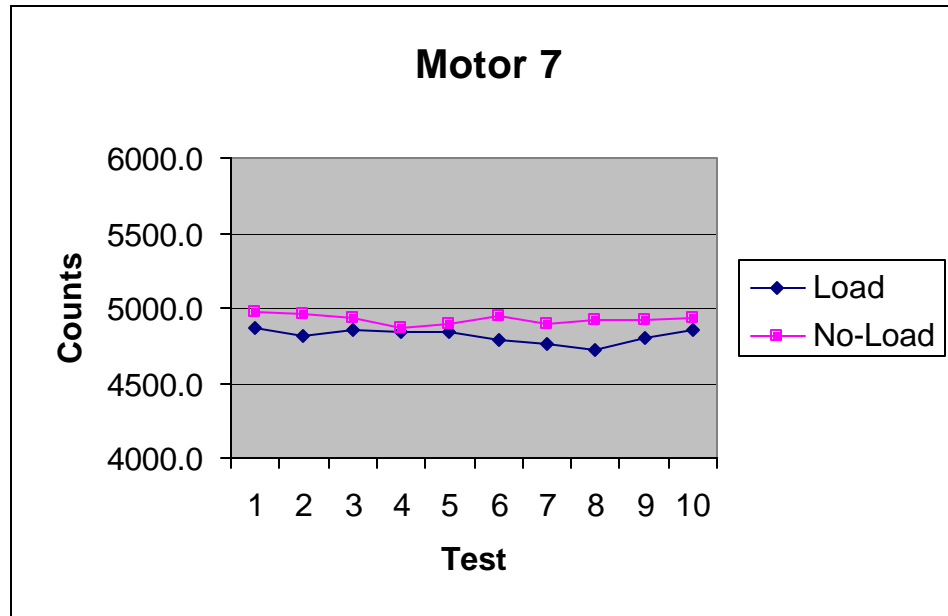
### Motor 6 Test Results

Test #	No-Load	Load
1	5031.0	4940.0
2	5037.0	4912.0
3	5034.0	4951.0
4	5041.0	4961.0
5	5041.0	4962.0
6	5032.0	4961.0
7	5045.0	4956.0
8	5044.0	4943.0
9	5045.0	4946.0
10	5051.0	4938.0
Sum	50401.0	49470.0
Average	5040.1	4947.0
RPM	315.0	309.2



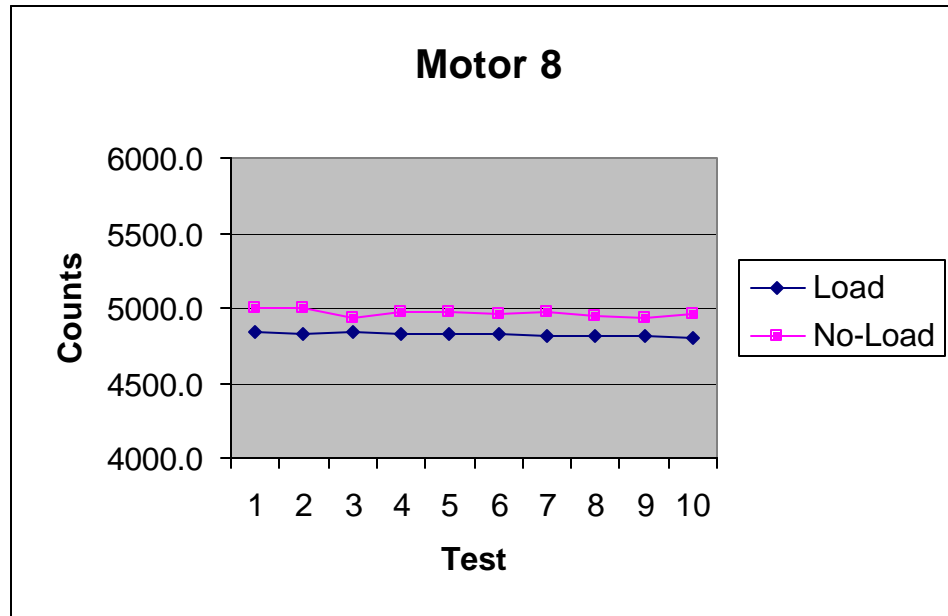
### Motor 7 Test Results

Test #	No-Load	Load
1	4969.0	4872.0
2	4965.0	4812.0
3	4929.0	4860.0
4	4862.0	4836.0
5	4890.0	4839.0
6	4941.0	4790.0
7	4892.0	4757.0
8	4925.0	4715.0
9	4925.0	4801.0
10	4939.0	4852.0
Sum	49211.0	48160.0
Average	4921.1	4816.0
RPM	307.6	301.0



### Motor 8 Test Results

Test #	No-Load	Load
1	4998.0	4844.0
2	4998.0	4822.0
3	4939.0	4836.0
4	4970.0	4824.0
5	4974.0	4821.0
6	4959.0	4824.0
7	4979.0	4818.0
8	4948.0	4809.0
9	4931.0	4814.0
10	4962.0	4804.0
Sum	49658.0	48216.0
Average	4965.8	4821.6
RPM	310.4	301.4



### Motor 9 Test Results

Test #	No-Load	Load
1	5108.0	5040.0
2	5089.0	5040.0
3	5099.0	5041.0
4	5089.0	5043.0
5	5102.0	5035.0
6	5085.0	5035.0
7	5093.0	5024.0
8	5084.0	5036.0
9	5112.0	5025.0
10	5084.0	5032.0
Sum	50945.0	50351.0
Average	5094.5	5035.1
RPM	318.4	314.7

